



House Design


Origin Collection

Reef Facade shown on the Mlles 27

House Size	24.82sq					
Amenities	4 Bedroom	2 Living	2 Bathroom	1 Powder	2 Garage	
Suitable Facades	Gorge	Marine	Ocean	Otway	Port	Reef

The Miles offers the best of double-storey living, with up to five bedrooms and two separate living areas to keep everyone comfortable. The open-plan kitchen, meals and family zone connects to the outdoors, while the upstairs rumpus creates a private retreat. It's a design that balances togetherness with personal space.

Built with Care

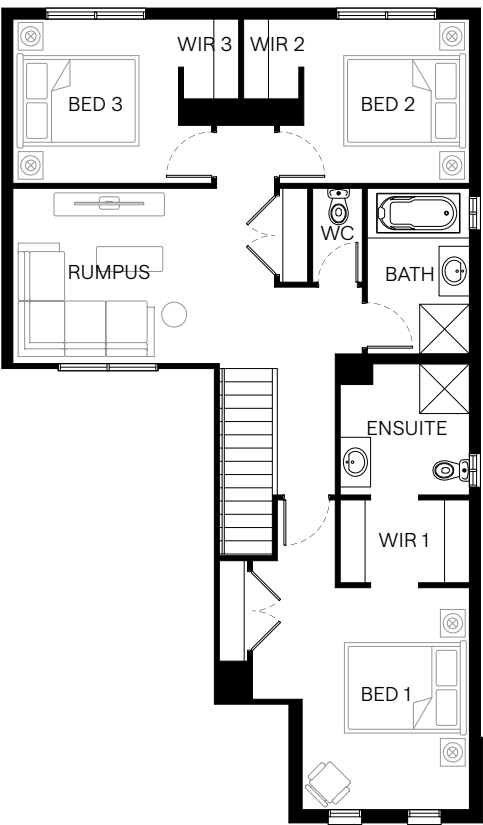
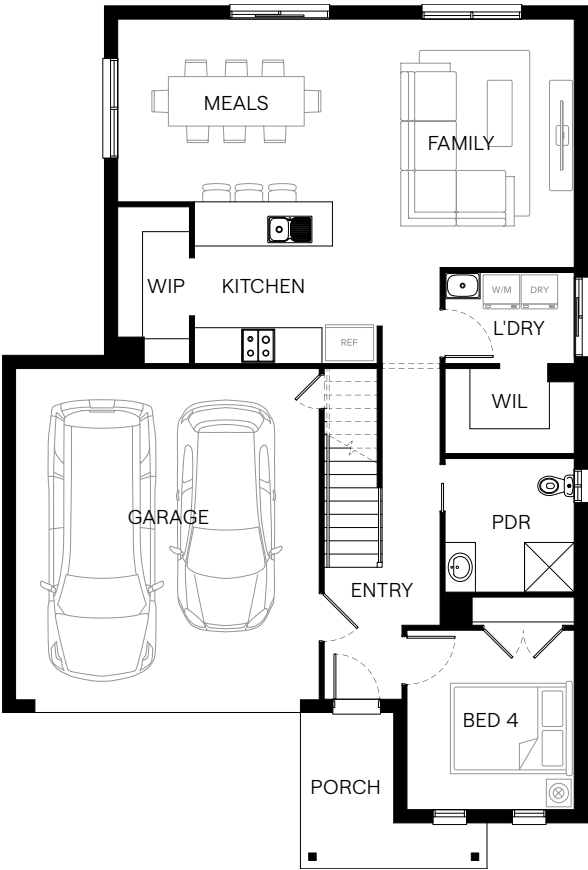


Scan to view this design online

Disclaimer: All photographs in this flyer and on our website are for illustration purposes only and include examples of upgraded items.



Standard Floorplan	Port Facade				
Specifications	House Width	House Depth	Min Block Width	Min Block Depth	Storey
	10.6m	15.6m	12.5m	21.0m	Double
Room Sizes	Bedroom 1	Bedroom 2	Bedroom 3	Bedroom 4	
	3.0 x 4.0m	3.0 x 3.0m	3.0 x 3.0m	3.0 x 3.3m	
	Family	Rumpus	Meals	Kitchen	
	4.4 x 4.5m	3.7 x 3.2m	3.9 x 3.3m	3.3 x 2.9m	
House Specifications	Ground Floor	First Floor	Garage	Porch	House Total
	94.78m ²	93.44m ²	36.20m ²	6.18m ²	230.61m ²
	10.20sq	10.06sq	3.90sq	0.67sq	24.82sq
Structural Options	See website or contact us for a variety of available structural options				



Suggested block width and depth are a guide only. Actual front, rear and side setbacks vary based on developer, council and rescode requirements. © Copyright. Reproduction in any form either in whole or part is forbidden. Fairhaven Homes has the right to alter or improve this plan without notice. CDB-U 48497