



Avalon 33

House Design


Momentum Collection

Apex Facade shown on the Newcastle 41

House Size	33.43sq						
Amenities	5 Bedroom	2 Living	2 Bathroom	2 Powder	2 Garage		
Suitable Facades	Apex	Ashmond	Edge	Greyson	Holbrook	Latrobe	Madison
	Meridian	Nixon	Patterson	Pinnacle	Ridge	Spire	Summit

In the Avalon, five bedrooms and two living areas come together in a functional, spacious double-storey layout. The kitchen forms the heart of the home, and the upstairs rumpus offers a second space for relaxing or entertaining. It's a design that keeps up with changing needs.

Built with Care

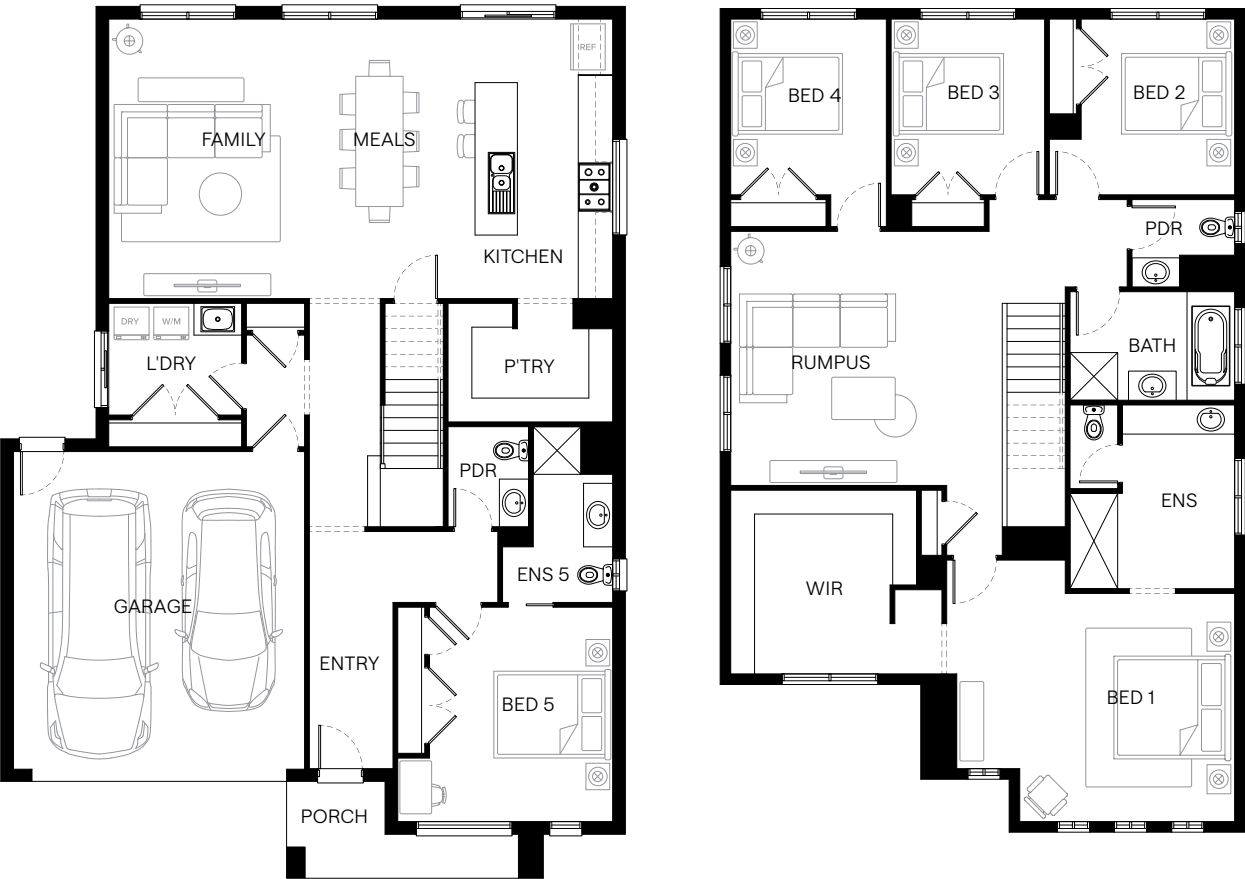


Scan to view this design online

Disclaimer: All photographs in this flyer and on our website are for illustration purposes only and include examples of upgraded items.



Standard Floorplan	Pinnacle Facade				
Specifications	House Width	House Depth	Min Block Width	Min Block Depth	Storey
	11.8m	16.5m	14.0m	25.0m	Double
Room Sizes	Bedroom 1	Bedroom 2	Bedroom 3	Bedroom 4	Bedroom 5
	5.3 x 4.3m	2.9 x 3.3m	2.9 x 3.3m	2.9 x 3.3m	3.4 x 4.1m
	Family	Rumpus	Meals	Kitchen	
	6.9 x 2.6m	5.1 x 4.8m	6.9 x 2.6m	2.6 x 5.3m	
House Specifications	Ground Floor	First Floor	Garage	Porch	House Total
	126.39m ²	142.11m ²	36.19m ²	5.88m ²	310.58m ²
	13.60sq	15.30sq	3.90sq	0.63sq	33.43sq
Structural Options	See website or contact us for a variety of available structural options				



Suggested block width and depth are a guide only. Actual front, rear and side setbacks vary based on developer, council and rezone requirements. © Copyright. Reproduction in any form either in whole or part is forbidden. Fairhaven Homes has the right to alter or improve this plan without notice. CDB-U 48497