



Harbord 22

House Design

Origin Collection

Arena Facade shown on the Carter 19

House Size	21.83sq					
Amenities	4 Bedroom	2 Living	2 Bathroom	2 Garage		
Suitable Facades	Arena	Brook	Coast	Cove	Hampton	Lagoon
	Nordic	Valley				

The Harbord is built to make life easier, with open-plan living at the rear, storage where it's needed, and a second living space to relax or retreat. The kitchen connects directly to meals and family areas, keeping daily life flowing. From quiet mornings to full tables, it's a design that gives you more of what matters.

Built with Care

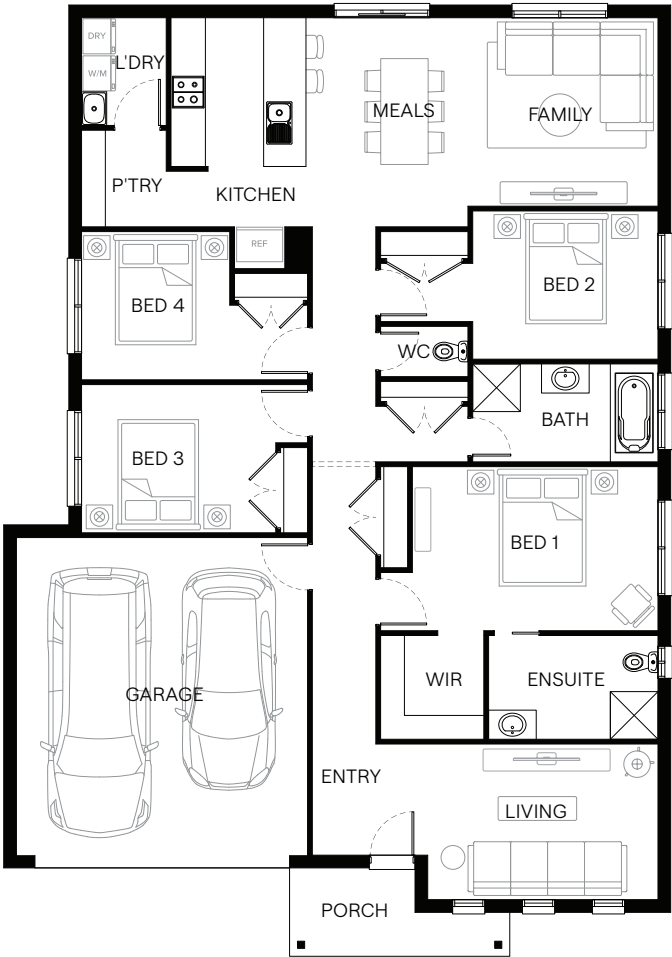


Scan to view this design online

Disclaimer: All photographs in this flyer and on our website are for illustration purposes only and include examples of upgraded items.



Standard Floorplan	Valley Facade				
Specifications	House Width	House Depth	Min Block Width	Min Block Depth	Storey
	12.6m	18.0m	14.0m	25.0m	Single
Room Sizes	Bedroom 1	Bedroom 2	Bedroom 3	Bedroom 4	
	4.6 x 3.1m	3.5 x 2.8m	3.7 x 2.8m	2.8 x 2.8m	
	Family	Meals	Kitchen		
	3.3 x 3.6m	3.3 x 3.6m	2.6 x 2.8m		
House Specifications	Ground Floor	Garage	Porch	House Total	
	161.24m²	36.11m²	5.44m²	202.80m²	
	17.36sq	3.89sq	0.59sq	21.83sq	
Structural Options	See website or contact us for a variety of available structural options				



Suggested block width and depth are a guide only. Actual front, rear and side setbacks vary based on developer, council and rescode requirements. © Copyright. Reproduction in any form either in whole or part is forbidden. Fairhaven Homes has the right to alter or improve this plan without notice. CDB-U 48497