

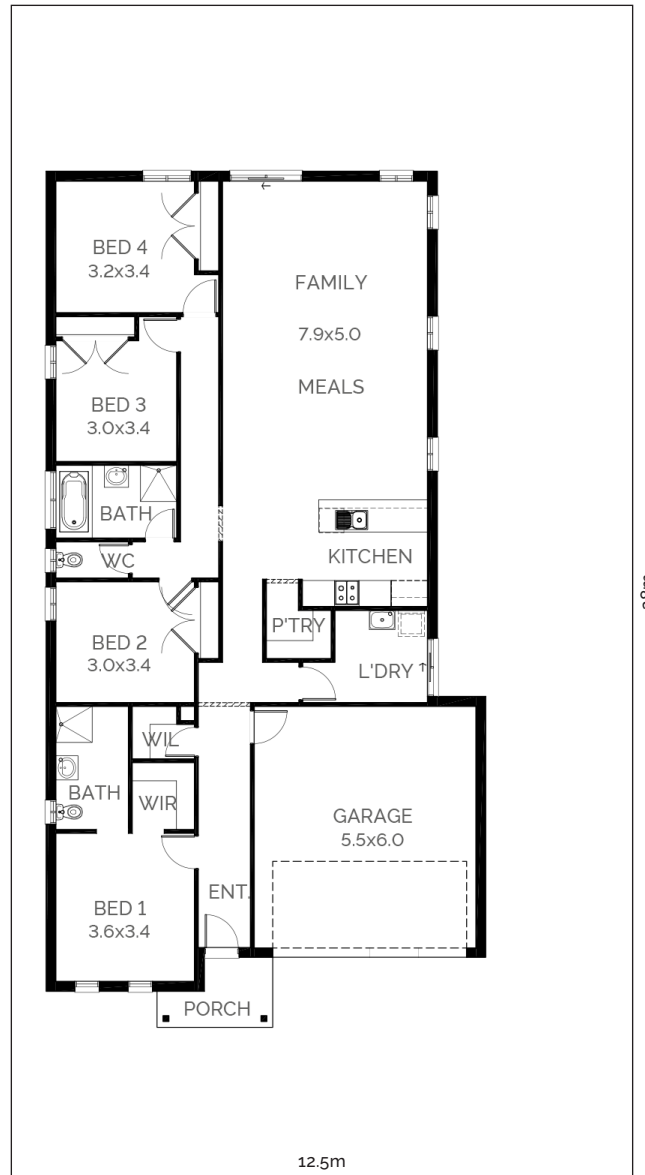


Vibe 219



-
- ▶ BLOCK WIDTH 12.5m
 - ▶ BLOCK DEPTH 28m
 - ▶ HOUSE WIDTH 11.1m
 - ▶ HOUSE DEPTH 21.2m
-

The Vibe 219 features a large Kitchen, Meals and Family opening to the rear of the home, with four generous sized Bedrooms. The Main Bedroom including Ensuite and Walk-In-Robe are located to the front of the home. A further three bedrooms off the rear hallway connect to the Bathroom and separate water closet. A range of facades and floor plans are available.



Standard Design