

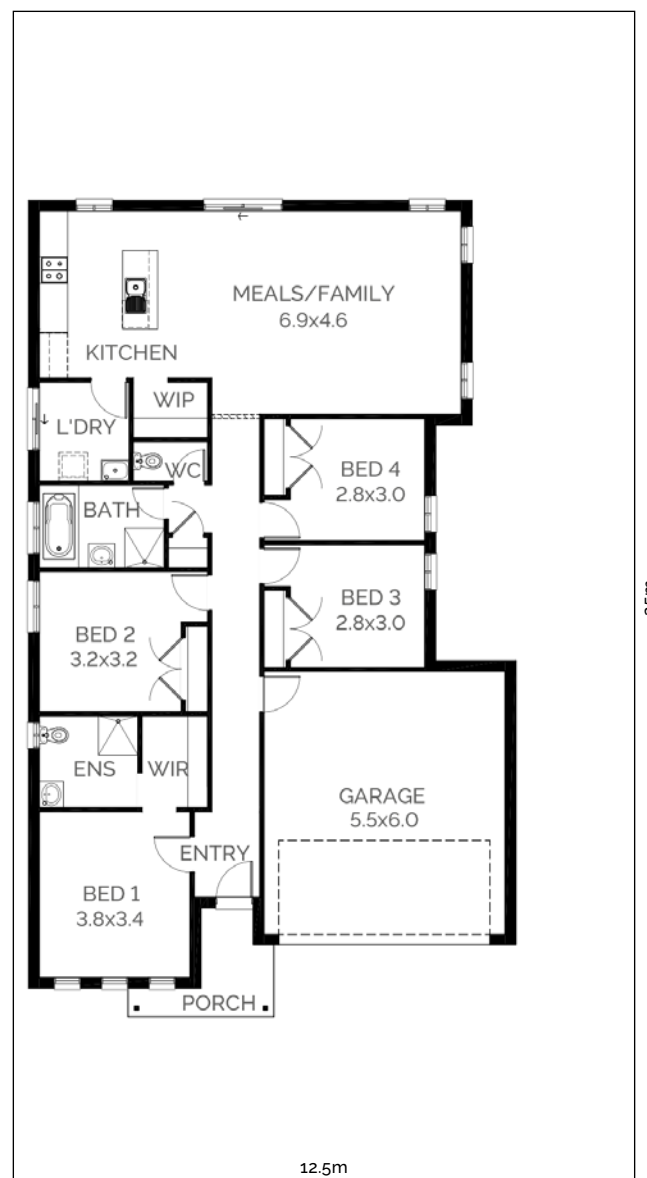


Neo 195

 4  2  2 19.5sq

-
- | | |
|------------------------|------------------------|
| ▶ BLOCK WIDTH
12.5m | ▶ BLOCK DEPTH
25m |
| ▶ HOUSE WIDTH
11.1m | ▶ HOUSE DEPTH
18.6m |
-

The Neo 195 features four-bedrooms and a large open plan Kitchen, Meals and Family to the rear of the home. The front Main Bedroom has a connecting Walk-In-Robe and Ensuite. The central Bathroom offers shower and bath, with a separate water closet off the main hallway. A range of facades and floor plans are available.



Standard Design