




# Mica 22

House Design	Origin Collection						Nordic Facade shown on the Carter 19
House Size	22.22sq						
Amenities	4 Bedroom	2 Living	2 Bathroom	1 Study	1 COA	2 Garage	
Suitable Facades	Arena	Brook	Coast	Cove	Hampton	Lagoon	
	Nordic	Valley					

Thoughtfully designed around daily needs, the Mica features a connected kitchen, family, and meals area, while the additional living and study nook provide extra breathing room. All four bedrooms are spaced for comfort, with practical storage in all the right places. It's a home that's easy to move through, and even easier to make your own.

*Built with Care*

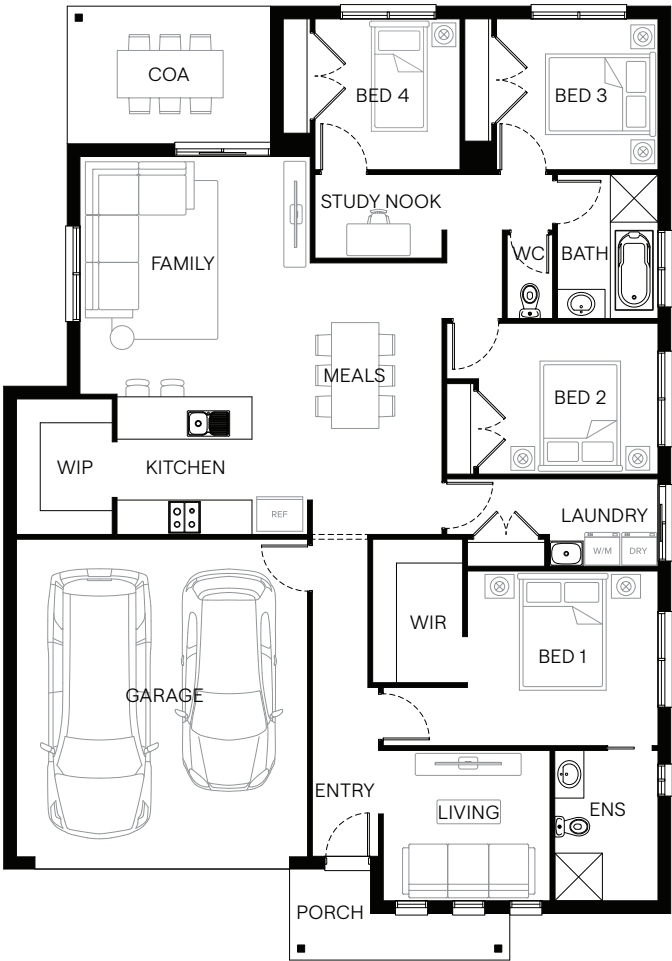


Scan to view this design online

Disclaimer: All photographs in this flyer and on our website are for illustration purposes only and include examples of upgraded items.



Standard Floorplan	Valley Facade				
Specifications	House Width	House Depth	Min Block Width	Min Block Depth	Storey
	12.6m	18.0m	14.0m	25.0m	Single
Room Sizes	Bedroom 1	Bedroom 2	Bedroom 3	Bedroom 4	Study Nook
	3.6 x 3.3m	3.4 x 2.9m	3.1 x 2.9m	2.7 x 2.9m	2.4 x 1.6m
	Family	Meals	Kitchen		
	4.4 x 4.5m	3.6 x 4.5m	3.6 x 2.7m		
House Specifications	Ground Floor	Garage	Porch	COA	House Total
	155.78m <sup>2</sup>	35.76m <sup>2</sup>	4.94m <sup>2</sup>	9.98m <sup>2</sup>	206.47m <sup>2</sup>
	16.77sq	3.85sq	0.53sq	1.07sq	22.22sq
Structural Options	See website or contact us for a variety of available structural options				



Suggested block width and depth are a guide only. Actual front, rear and side setbacks vary based on developer, council and rescode requirements. © Copyright. Reproduction in any form either in whole or part is forbidden. Fairhaven Homes has the right to alter or improve this plan without notice. CDB-U 48497