



Nordic facade as shown on the Hawksbury 34

BRIDGEWATER COLLECTION

# The Hawksbury

34

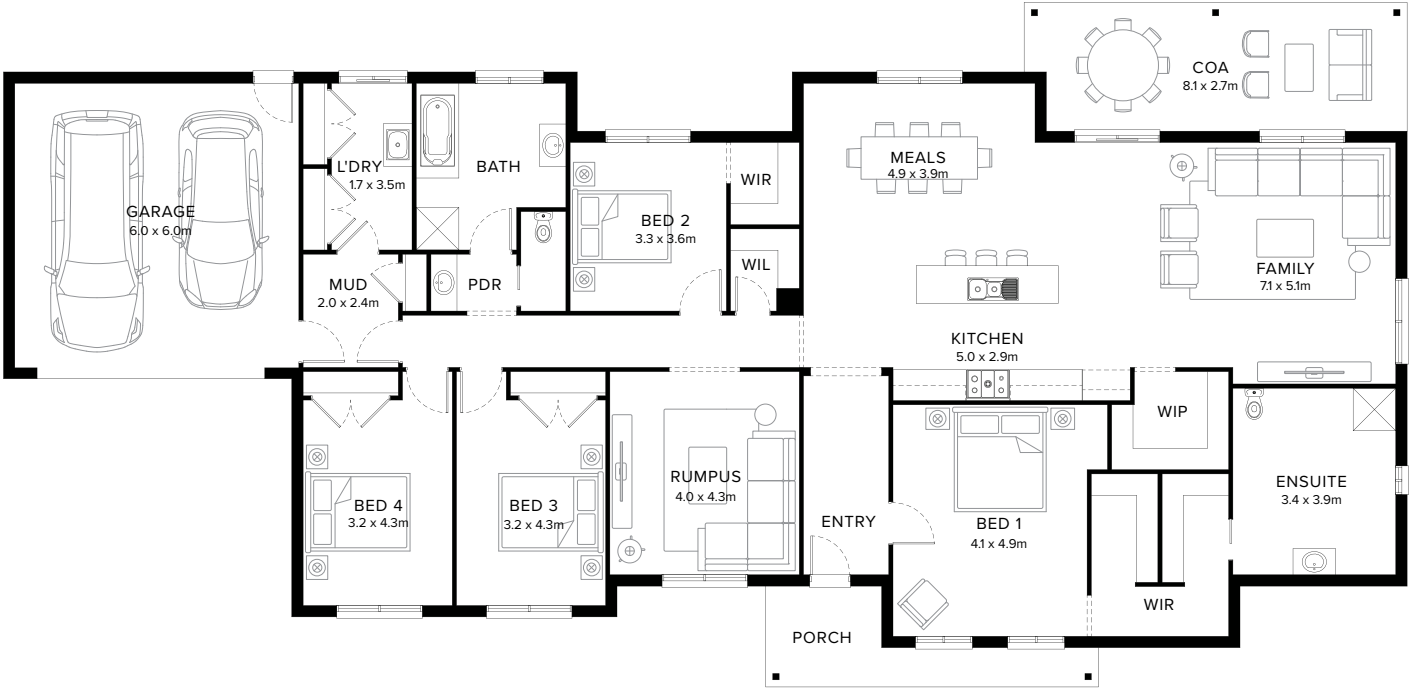
4  2  2  1  2  1 

## Unlock Blissful Lifestyle

Entering into the Hawksbury feels like you're stepping into a hotel and realising it's as luxurious and calming as expected. Generously spreading across 29 metres, the main bedroom occupies the right wing, with the remaining three bedrooms positioned on the left side. Envision experiencing that contentment daily with the Hawksbury.

**Fairhaven Homes**

# Standard Floorplan



## Specifications

Living	Garage	Porch*	C.O.A	House Total*	Facade
254.00m <sup>2</sup>	40.44m <sup>2</sup>	9.02m <sup>2</sup>	21.42m <sup>2</sup>	324.87m <sup>2</sup>	Estate
27.34sq	4.35sq	0.97sq	2.31sq	34.97sq	

# Specifications & Options

## Suitable Facades

Estate	Sanctuary
Hampton	Nordic

House Width	House Depth	Block Width	Block Depth
29.7m	14.5m	≥ 32m	≥ 22m

## Available Options

- ★ Bath, extended shower, vanity and enclosed wc to ensuite
  - ★ Triple garage
  - ★ Secondary garage
  - ★ Bedroom 2 with ensuite and walk-in-robe in lieu of walk-in- linen with extended shower to ensuite
  - ★ Living and bedroom 5 with reconfigured rumpus, linen cupboard
- 3 bedroom in lieu of 4, with extended shower, vanity and enclosed wc to ensuite
  - Alternte bathroom layout with extended shower and vanity
  - Extended covered outdoor area
  - Living and study with reconfigured rumpus, walk-in- linen

More options available

Speak to a New Home Consultant

★ Popular Option

### Browse our Brochure Library


Explore our full range of Floorplans, Facades & Inclusions.

[View brochures](#)

FLOORPLANS

Bridgewater

OUR VIBRANT & CONTEMPORARY COLLECTION




Fairhaven Homes

FACADES

Bridgewater

OUR VIBRANT & CONTEMPORARY COLLECTION




Fairhaven Homes

INCLUSIONS

Bridgewater

OUR VIBRANT & CONTEMPORARY COLLECTION



Fairhaven Homes

## Fairhaven Homes