



## House Design

## Origin Collection

Coast Facade shown on the Carter 19

House Size	22.19sq					
Amenities	4 Bedroom	2 Living	2 Bathroom	1 Study	2 Garage	
Suitable Facades	Arena	Brook	Coast	Cove	Hampton	Lagoon
	Nordic	Valley				

From the moment you enter, the Avoca feels simple and seamless, with bedrooms zoned for privacy and a central bathroom that keeps mornings moving. The kitchen overlooks the open-plan living space, perfect for dinner, downtime, or catching up. And with a walk-in pantry, dedicated laundry and direct access to the backyard, every detail makes life just a little easier.

*Built with Care*

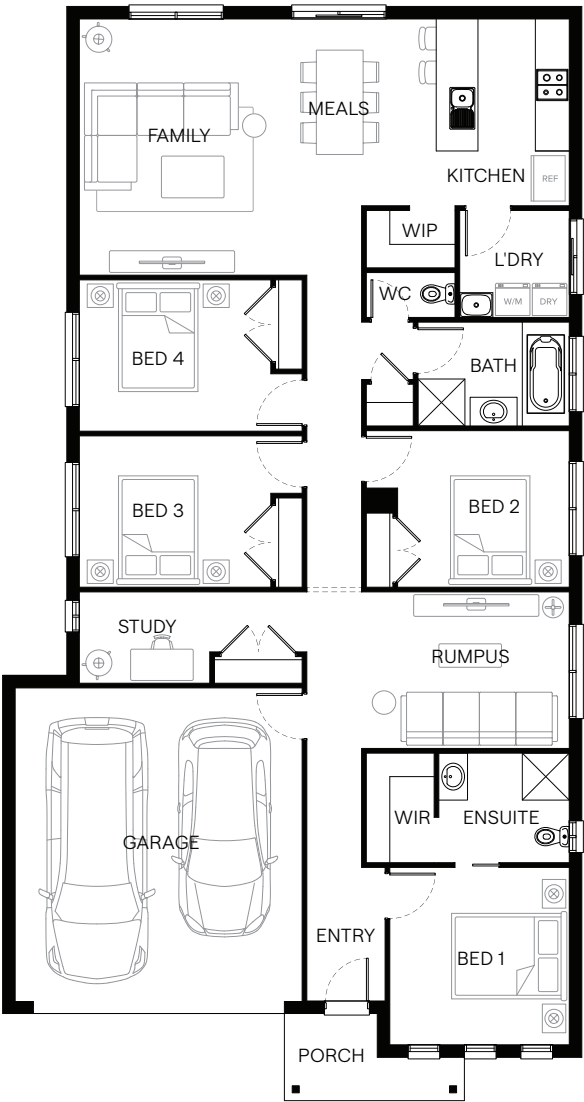


Scan to view this design online

Disclaimer: All photographs in this flyer and on our website are for illustration purposes only and include examples of upgraded items.



Standard Floorplan	Valley Facade				
Specifications	House Width	House Depth	Min Block Width	Min Block Depth	Storey
	11.1m	21.0m	12.5m	28.0m	Single
Room Sizes	Bedroom 1	Bedroom 2	Bedroom 3	Bedroom 4	
	3.4 x 3.4m	3.3 x 3.0m	3.7 x 2.9m	3.7 x 2.9m	
	Family	Rumpus	Meals	Kitchen	Study
	3.4 x 4.9m	4.0 x 3.0m	3.4 x 4.9m	2.6 x 3.6m	2.5 x 1.8m
House Specifications	Ground Floor	Garage	Porch	House Total	
	165.64m²	36.11m²	4.35m²	206.11m²	
	17.83sq	3.89sq	0.47sq	22.19sq	
Structural Options	See website or contact us for a variety of available structural options				



Suggested block width and depth are a guide only. Actual front, rear and side setbacks vary based on developer, council and rescode requirements. © Copyright. Reproduction in any form either in whole or part is forbidden. Fairhaven Homes has the right to alter or improve this plan without notice. CDB-U 48497