



# Tathra 363


Momentum Collection

This house design has been replaced by the Torquay 31

House Size	37.34sq						
Facade	Ravine						
Amenities	4 Bedroom	2 Living	2 Bathroom	2 Garage	1 COA		
Suitable Facades	Apex	Ashmond	Edge	Greyson	Holbrook	Latrobe	Madison
	Meridian	Nixon	Patterson	Pinnacle	Ridge	Spire	Summit

The Tathra 363 features five bedrooms and can easily customise to six. A spacious family, open plan kitchen/meals area and theatre on the ground floor are complimented by a large upstairs rumpus providing a second living space.

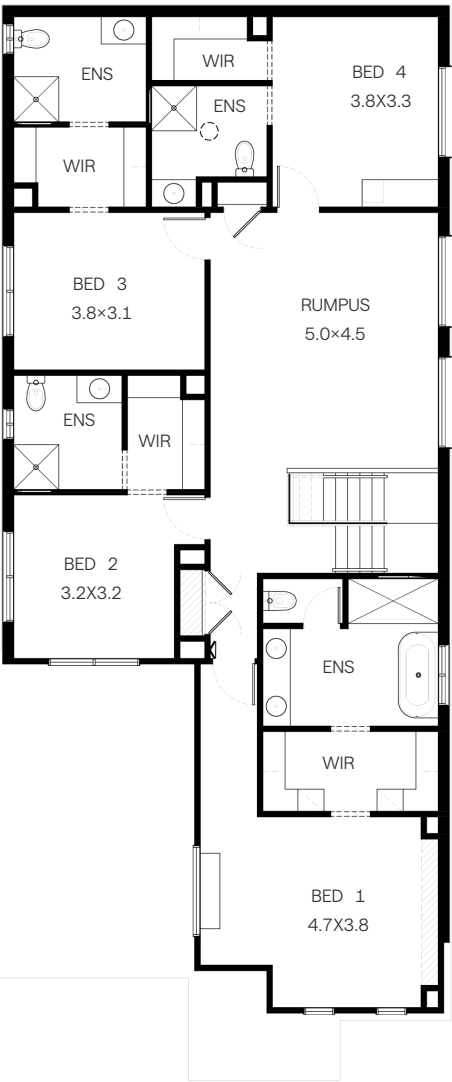
*Built with Care*



Scan to view this display online

As Displayed

Specifications	House Width	House Depth	Block Width	Block Depth	Storey	
	12.0m	21.3m	12.5m	25.0m	Double	
Room Sizes	Bedroom 1	Bedroom 2	Bedroom 3	Bedroom 4	Bedroom 5	
	4.7 x 3.8m	3.2 x 3.2m	3.8 x 3.1m	3.8 x 3.3m	3.5 x 3.3m	
	Family	Rumpus	Meals	COA		
	5.1 x 3.9m	3.9 x 3.3m	4.5 x 3.0m	3.3 x 3.7m		
House Specifications	Ground Floor	First Floor	Garage	Porch	COA	House Total
	38.02m²	148.31m²	42.73m²	4.80m²	13.00m²	346.86m²
	14.86sq	15.96sq	4.60sq	0.52sq	1.40sq	37.34sq



Disclaimer: All photographs in this flyer and on our website are for illustration purposes only and include examples of upgraded items. Suggested block width and depth are a guide only. Actual front, rear and side setbacks vary based on developer, council and rescode requirements. © Copyright. Reproduction in any form either in whole or part is forbidden. Fairhaven Homes has the right to alter or improve this plan without notice. CDB-U 48497