



House Design


Origin Collection

Nordic Facade shown on the Carter 19

House Size	17.06sq					
Amenities	3 Bedroom	1 Living	2 Bathroom	2 Garage		
Suitable Facades	Arena	Brook	Coast	Cove	Hampton	Lagoon
	Nordic	Valley				

The Bondi makes the most of every square metre with three bedrooms, two bathrooms, and open-plan living that brings everyone together. The main bedroom at the front offers privacy and space, while the rear living area connects easily to the meals and kitchen. It's a home designed to keep life flowing, with just enough room for everything that matters.

Built with Care

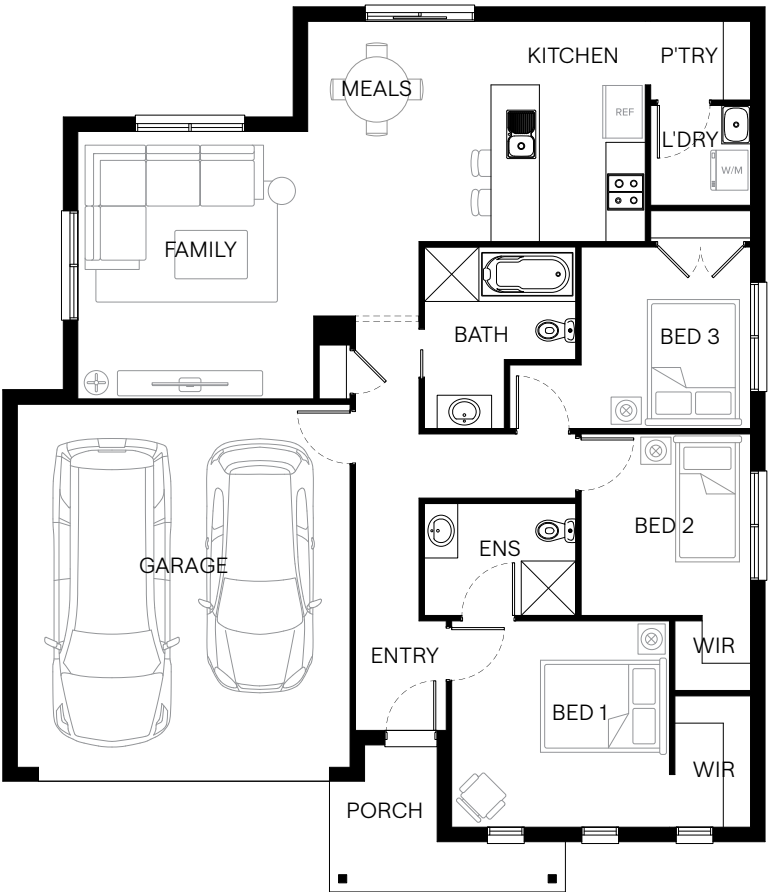


Scan to view this design online

Disclaimer: All photographs in this flyer and on our website are for illustration purposes only and include examples of upgraded items.



Standard Floorplan	Valley Facade					
Specifications	House Width	House Depth	Min Block Width	Min Block Depth	Storey	
	12.6m	14.6m	14.0m	21.0m	Single	
Room Sizes	Bedroom 1	Bedroom 2	Bedroom 3	Family	Kitchen	Meals
	3.6 x 3.4m	2.8 x 3.0m	2.8 x 3.0m	3.9 x 4.4m	2.5 x 2.6m	3.0 x 3.6m
House Specifications	Ground Floor	Garage	Porch	House Total		
	116.53m ²	36.20m ²	5.73m ²	158.47m ²		
	12.54sq	3.90sq	0.62sq	17.06sq		
Structural Options	See website or contact us for a variety of available structural options					



Suggested block width and depth are a guide only. Actual front, rear and side setbacks vary based on developer, council and rescode requirements. © Copyright. Reproduction in any form either in whole or part is forbidden. Fairhaven Homes has the right to alter or improve this plan without notice. CDB-U 48497