



Torquay 31

House Design

Momentum Collection

Latrobe Facade shown on the Newcastle 41

House Size	30.61sq						
Amenities	5 Bedroom	2 Living	2 Bathroom	1 Powder	1 COA	2 Garage	
Suitable Facades	Apex	Ashmond	Edge	Greyson	Holbrook	Latrobe	Madison
	Meridian	Nixon	Patterson	Pinnacle	Ridge	Spire	Summit

The Torquay combines family connection with private retreat across two levels. Downstairs, the kitchen anchors an open-plan meals and living area that flows to the outdoors, with a theatre for added flexibility. Upstairs, four bedrooms surround a central rumpus, while the spacious main bedroom offers its own ensuite and walk-in robe. With a fifth bedroom on the ground floor, this home is ready for multi-generational living or growing households.

Built with Care

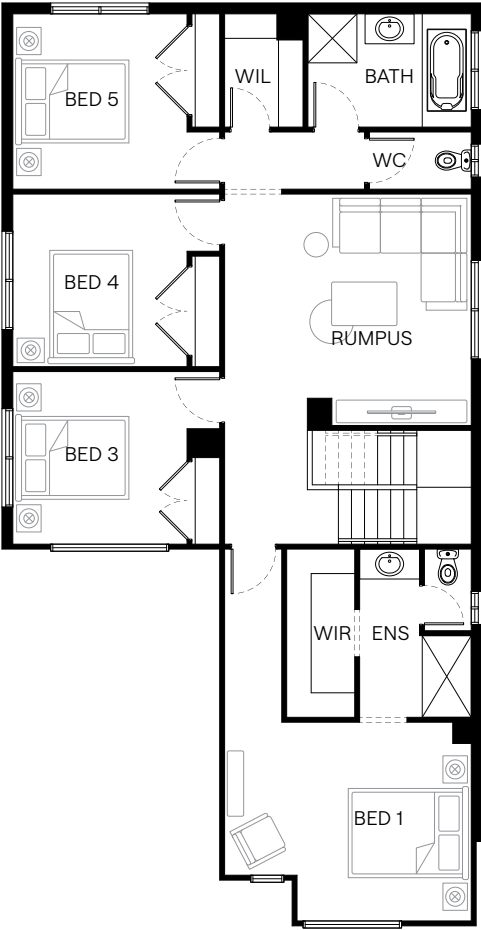
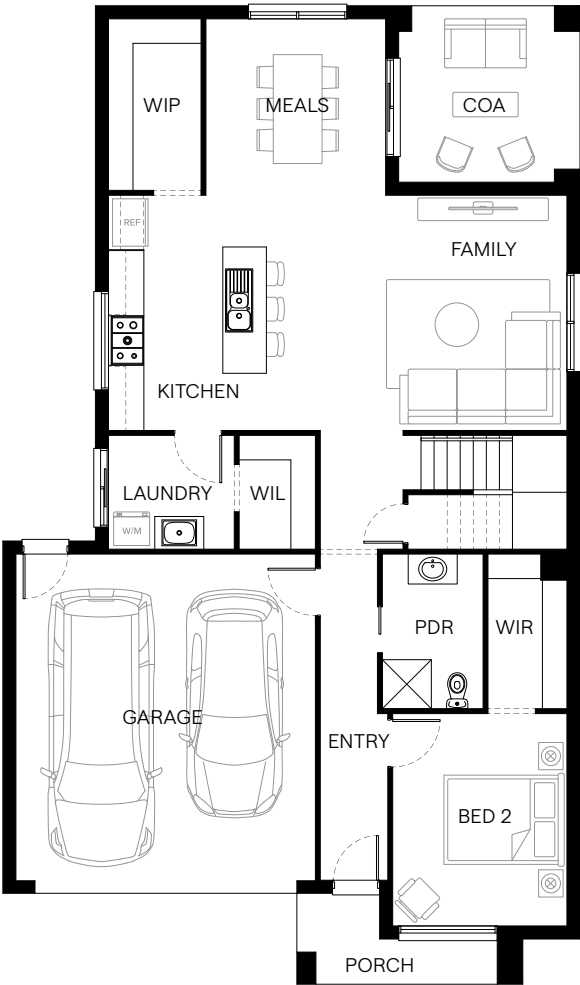


Scan to view this design online

Disclaimer: All photographs in this flyer and on our website are for illustration purposes only and include examples of upgraded items.



Standard Floorplan	Pinnacle Facade					
Specifications	House Width	House Depth	Min Block Width	Min Block Depth	Storey	
	10.6m	18.0m	12.5m	25.0m	Double	
Room Sizes	Bedroom 1	Bedroom 2	Bedroom 3	Bedroom 4	Bedroom 5	
	4.2 x 3.7m	3.2 x 3.9m	3.2 x 3.3m	3.3 x 3.2m	3.2 x 3.2m	
	Family	Rumpus	Meals	Kitchen	COA	
	4.5 x 4.3m	4.5 x 3.8m	3.3 x 3.2m	2.9 x 4.3m	3.3 x 3.2m	
House Specifications	Ground Floor	First Floor	Garage	Porch	COA	House Total
	112.43m ²	120.53m ²	36.17m ²	4.72m ²	10.56m ²	284.41m ²
	12.10sq	12.97sq	3.89sq	0.51sq	1.14sq	30.61sq
Structural Options	See website or contact us for a variety of available structural options					



Suggested block width and depth are a guide only. Actual front, rear and side setbacks vary based on developer, council and rescode requirements. © Copyright. Reproduction in any form either in whole or part is forbidden. Fairhaven Homes has the right to alter or improve this plan without notice. CDB-U 48497