



## House Design

## Momentum Collection

Edge Facade shown on the Newcastle 41

House Size	28.18sq						
Amenities	4 Bedroom	2 Living	2 Bathroom	1 Powder	2 Garage		
Suitable Facades	Apex	Ashmond	Edge	Greyson	Holbrook	Latrobe	Madison
	Meridian	Nixon	Patterson	Pinnacle	Ridge	Spire	Summit

The Newcastle offers space for every moment, with a design that balances family connection and personal retreat. Downstairs, the kitchen anchors a generous open-plan meals and family zone, flowing seamlessly to the theatre and outdoor area. Upstairs, five bedrooms are paired with a central rumpus and study, giving everyone room to rest, work or play. With thoughtful storage throughout and living areas on both levels, the Newcastle is made to support busy households with ease.

*Built with Care*

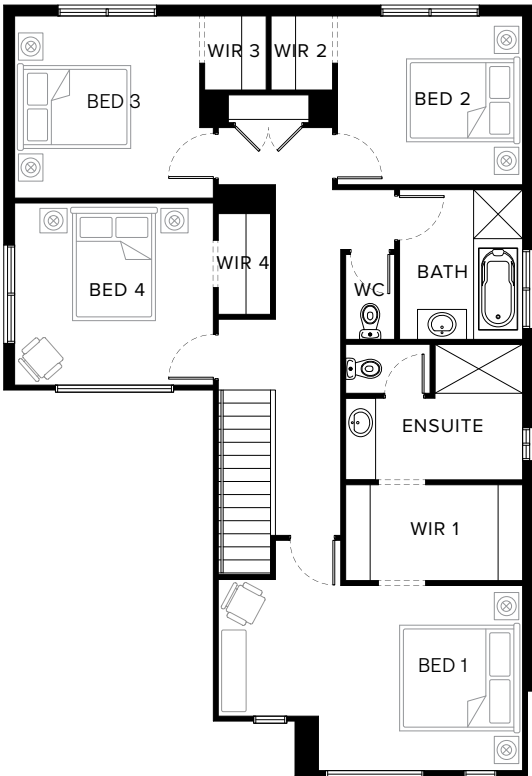
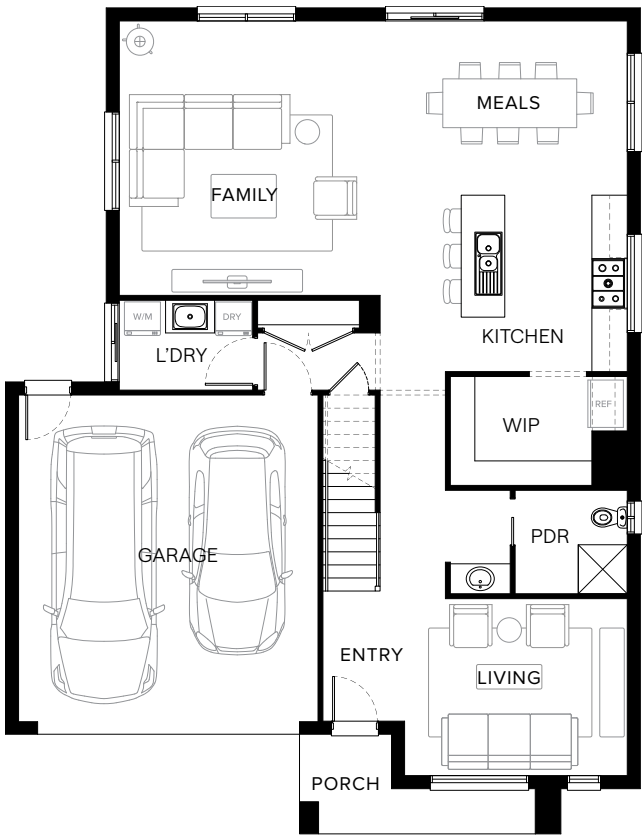


Scan to view this design online

Disclaimer: All photographs in this flyer and on our website are for illustration purposes only and include examples of upgraded items.



Standard Floorplan	Pinnacle Facade				
Specifications	House Width	House Depth	Min Block Width	Min Block Depth	Storey
	11.7m	15.2m	14.0m	22.0m	Double
Room Sizes	Bedroom 1	Bedroom 2	Bedroom 3	Bedroom 4	
	5.6 x 3.4m	3.4 x 3.1m	3.4 x 3.3m	3.7 x 3.3m	
	Living	Family	Meals	Kitchen	
	4.1 x 3.3m	4.8 x 5.0m	4.5 x 3.2m	3.1 x 3.2m	
House Specifications	Ground Floor	First Floor	Garage	Porch	House Total
	111.20m <sup>2</sup>	108.75m <sup>2</sup>	36.20m <sup>2</sup>	5.67m <sup>2</sup>	261.83m <sup>2</sup>
	11.97sq	11.71sq	3.90sq	0.61sq	28.18sq
Structural Options	See website or contact us for a variety of available structural options				



Suggested block width and depth are a guide only. Actual front, rear and side setbacks vary based on developer, council and rescode requirements. © Copyright. Reproduction in any form either in whole or part is forbidden. Fairhaven Homes has the right to alter or improve this plan without notice. CDB-U 48497