



BRIDGEWATER COLLECTION

The Shoal

20

4  1  2  2  1 

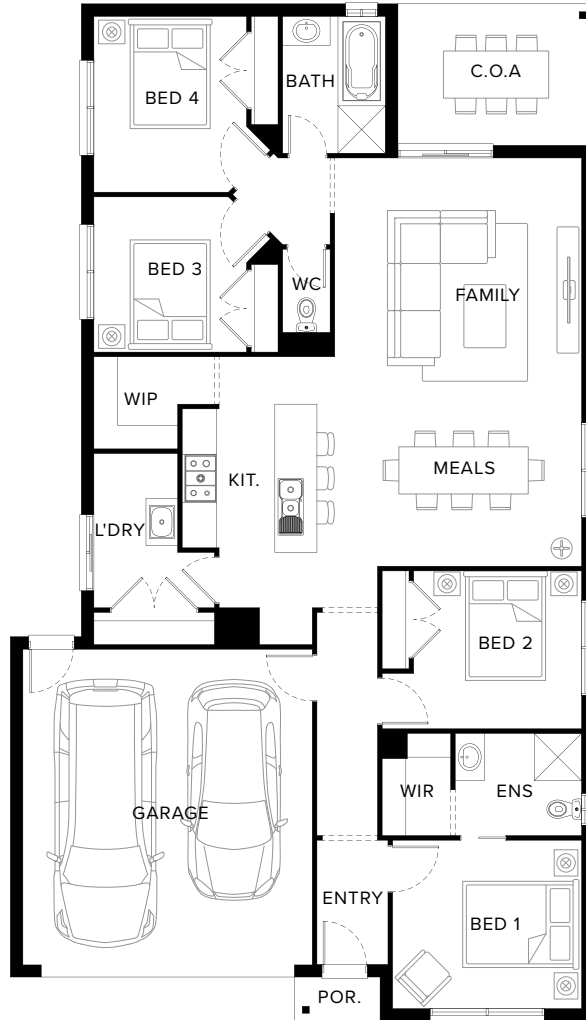
Captivating & Adored

The Shoal ticks all the boxes if you're looking for a design that combines style and functionality. Featuring four bedrooms, two bathrooms plus an abundance of space for a large family. The Shoal is a design that is both enchanting and comfortable.

Fairhaven Homes

Suggested block width and depth are a guide only. Actual front, rear and side setbacks vary based on developer, council and rescode requirements.
© Copyright. Reproduction in any form either in whole or part is forbidden. Fairhaven Homes has the right to alter or improve this plan without notice.
CDB-U 48497

Standard Floorplan



Specifications

Living	Garage	Porch*	C.O.A	Total*
146.41m ²	36.08m ²	1.37m ²	10.03m ²	193.90m ²
15.76sq	3.88sq	0.15sq	1.08sq	20.87sq

Fairhaven Homes

Specifications & Options

Suitable Facades

Harbour	Matrix	Dune	Canyon	Range	Providence
Pier	Eco	Peak	Surf Coast	Ravine	Resort
Botany	Tower	Sierra	Haven		

Block Width	Block Depth	House Width	House Depth	House Area
12.5m	27m	11.1m	19.3m	20.87sq

All Available Options

- ★ Extended Cabinetry to Laundry with Walk-In-Linen
- ★ Swap Living and Bedroom 1 Layout
- ★ Raked Ceiling
- Cabinetry to Walk-In-Pantry in lieu of Shelving
- Additional Cabinetry to Kitchen
- Cabinetry to Walk-In-Pantry in lieu of Shelving with Walk-In-Linen
- 3 Bedroom in lieu of 4, with Study
- 3 Bedroom in lieu of 4, with Study and Extended Shower and Vanity to Ensuite

More options available

Speak to a New Home Consultant

★ Popular Option

Browse our Brochure Library

Explore our full range of
Floorplans, Facades & Inclusions.

[View brochures](#)



Fairhaven Homes