



Brooklyn 29

House Design


Momentum Collection

Botany Facade shown on the Riverview 27

House Size	28.55sq						
Amenities	5 Bedroom	2 Living	2 Bathroom	1 COA	2 Garage		
Suitable Facades	Alpine	Botany	Canyon	Crest	Dune	Haven	Loch
	Peak	Pier	Providence	Range	Ravine	Regal	Resort
	Scandi	Sierra	Soho	Sovereign	Surfcoast	Tidal	

The Brooklyn combines generous proportions with thoughtful zoning, creating a home that feels balanced and connected. At its heart, the open-plan kitchen, meals and family area flow seamlessly to the outdoors, perfect for entertaining on any scale. The main bedroom is privately set at the front, while additional bedrooms and a rumpus are tucked away at the rear. With space to gather and space to retreat, the Brooklyn is designed to suit households that love to host and live large.

Built with Care

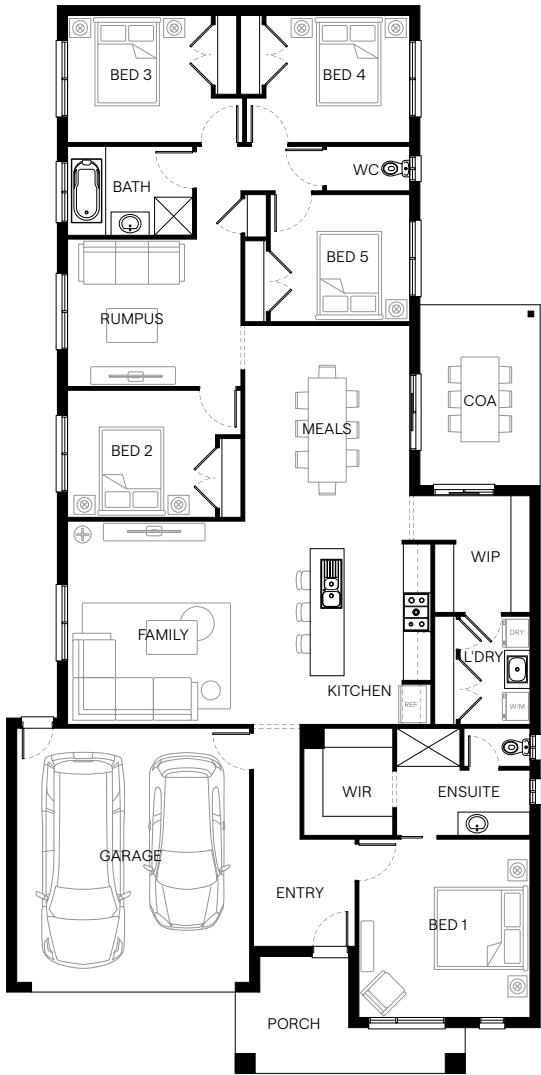


Scan to view this design online

Disclaimer: All photographs in this flyer and on our website are for illustration purposes only and include examples of upgraded items.



Standard Floorplan	Botany Facade				
Specifications	House Width	House Depth	Min Block Width	Min Block Depth	Storey
	12.6m	25.2m	14.0m	32.0m	Single
Room Sizes	Bedroom 1	Bedroom 2	Bedroom 3	Bedroom 4	Bedroom 5
	4.0 x 4.2m	3.5 x 3.0m	3.4 x 3.0m	3.4 x 3.0m	3.3 x 3.0m
	Family	Rumpus	Meals	Kitchen	COA
	5.7 x 4.8m	4.1 x 3.5m	3.9 x 4.6m	2.9 x 4.3m	2.8 x 4.2m
House Specifications	Ground Floor	Garage	Porch	COA	House Total
	206.90m ²	36.30m ²	9.87m ²	12.12m ²	265.22m ²
	22.27sq	3.91sq	1.06sq	1.30sq	28.55sq
Structural Options	See website or contact us for a variety of available structural options				



Suggested block width and depth are a guide only. Actual front, rear and side setbacks vary based on developer, council and rescode requirements. © Copyright. Reproduction in any form either in whole or part is forbidden. Fairhaven Homes has the right to alter or improve this plan without notice. CDB-U 48497