



# Bray 19

## House Design

## Origin Collection

Hampton Facade shown on the Carter 19

House Size	18.86sq					
Amenities	4 Bedroom	1 Living	2 Bathroom	2 Garage		
Suitable Facades	Arena	Brook	Coast	Cove	Hampton	Lagoon
	Nordic	Valley				

From the street to the back door, the Bray is carefully arranged to give every room its role, no wasted corners, no overthinking. Bedrooms are zoned for comfort, while the open kitchen, meals and family area keep day-to-day living flowing with ease. With a walk-in pantry, full laundry, and considered storage throughout, it's a home that works as hard as you do.

*Built with Care*

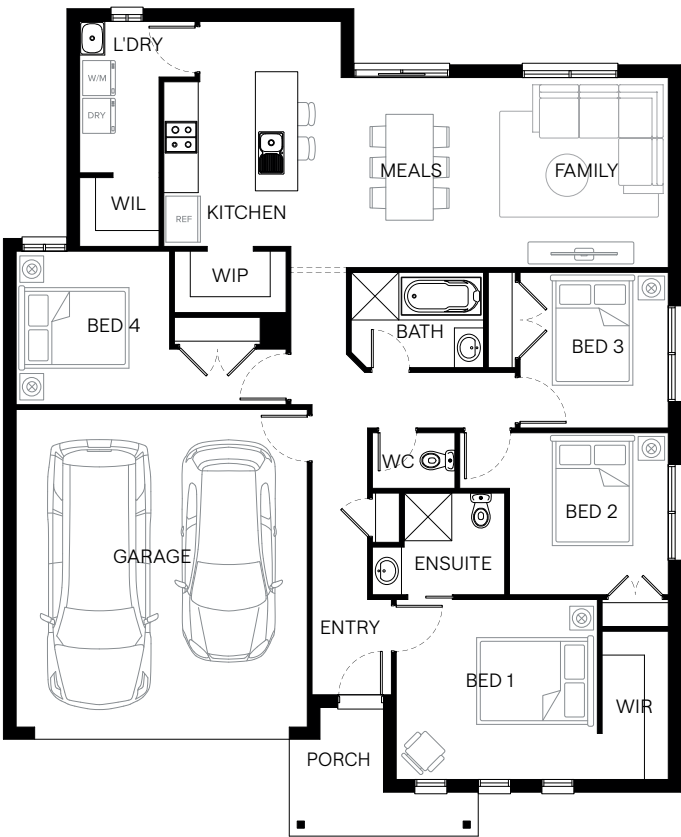


Scan to view this design online

Disclaimer: All photographs in this flyer and on our website are for illustration purposes only and include examples of upgraded items.



Standard Floorplan	Valley Facade				
Specifications	House Width	House Depth	Min Block Width	Min Block Depth	Storey
	12.8m	15.6m	14.0m	21.0m	Single
Room Sizes	Bedroom 1	Bedroom 2	Bedroom 3	Bedroom 4	
	3.8 x 3.4m	3.0 x 3.1m	2.8 x 2.9m	2.9 x 2.9m	
	Family	Kitchen	Meals		
	3.5 x 3.6m	2.5 x 3.1m	3.5 x 3.6m		
House Specifications	Ground Floor	Garage	Porch	House Total	
	133.82m²	35.96m²	5.46m²	175.24m²	
	14.40sq	3.87sq	0.59sq	18.86sq	
Structural Options	See website or contact us for a variety of available structural options				



Suggested block width and depth are a guide only. Actual front, rear and side setbacks vary based on developer, council and rescode requirements. © Copyright. Reproduction in any form either in whole or part is forbidden. Fairhaven Homes has the right to alter or improve this plan without notice. CDB-U 48497