



BRIDGEWATER COLLECTION

The Clovelly

27

4  2  2  2  1 

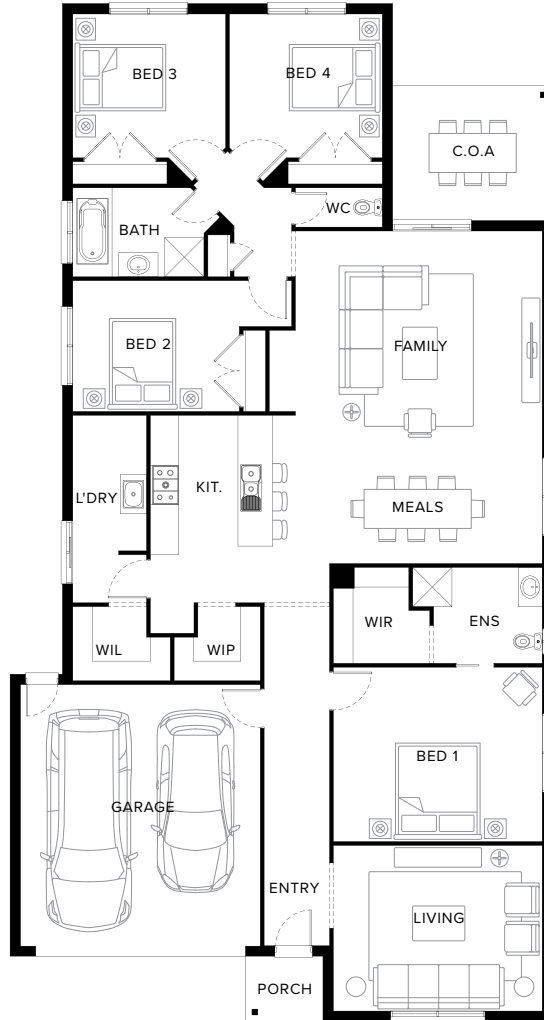
Comfort meets Thoughtfulness

Embrace contemporary and comfortable design of the Clovelly. One of our most popular home, this four-bedroom design has everything you want and need. The well-thought-out layout includes two living rooms, two bathrooms, a covered outdoor area and double garage. It caters to the preferences of those seeking a comfortable and visually appealing space.

Fairhaven Homes

Suggested block width and depth are a guide only. Actual front, rear and side setbacks vary based on developer, council and rescode requirements.
© Copyright. Reproduction in any form either in whole or part is forbidden. Fairhaven Homes has the right to alter or improve this plan without notice.
CDB-U 48497

Standard Floorplan



Specifications

Living	Garage	Porch*	C.O.A	Total*
207.27m ²	36.05m ²	2.67m ²	11.38m ²	257.36m ²
22.31sq	3.88sq	0.29sq	1.22sq	27.70sq

Fairhaven Homes

Specifications & Options

Suitable Facades

Harbour	Matrix	Dune	Canyon	Range	Providence
Pier	Eco	Peak	Surf Coast	Ravine	Resort
Botany	Tower	Sierra	Haven		

Block Width	Block Depth	House Width	House Depth	House Area
14m	32m	12.5m	23.4m	27.70sq

All Available Options

- ★ Mirrored Front with Extended Bedroom 1, Porch and Livinge
- ★ Alternate Ensuite Layout with Extended Shower and Vanity
- ★ Alternate Laundry and Walk-In-Pantry Layout with Cabinetry to Walk-In-Pantry in lieu of Shelving
- ★ Swap Living and Bedroom 1 Layout
- ★ Raked Ceiling
- Extended Walk-In-Pantry
- Extended Cabinetry to Laundry
- Removed Alcove with Extended Bedroom 2
- Alternate Bathroom Layout
- Alternate Bathroom Layout with Extended Shower
- Powder Room in lieu of WC


[More options available](#) [Speak to a New Home Consultant](#)

★ Popular Option

Browse our Brochure Library

Explore our full range of Floorplans, Facades & Inclusions.

[View brochures](#)



Fairhaven Homes