



BRIDGEWATER COLLECTION

# The Clovelly

22

4  2  2  2  1 

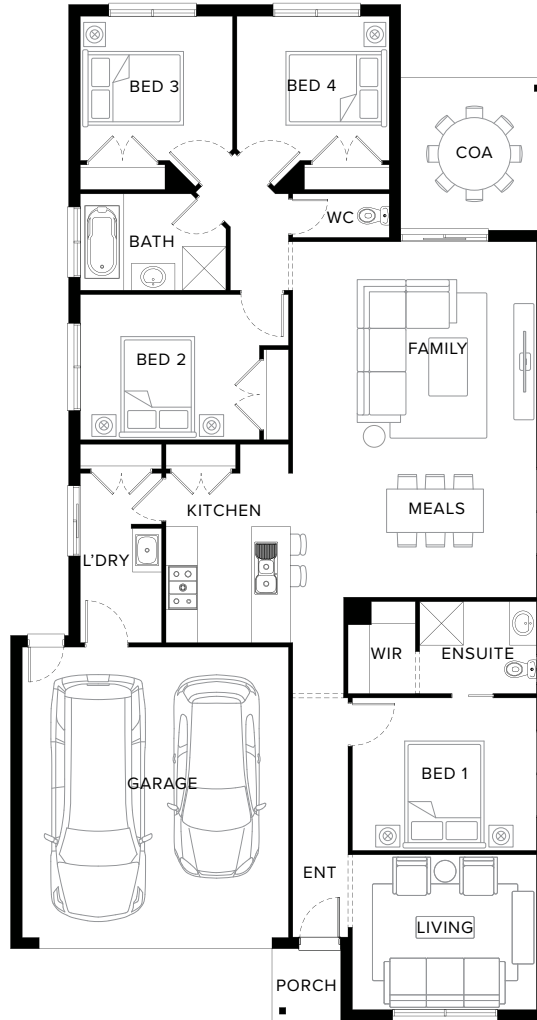
## Comfort meets Thoughtfulness

Embrace contemporary and comfortable design of the Clovelly. One of our most popular home, this four-bedroom design has everything you want and need. The well-thought-out layout includes two living rooms, two bathrooms, a covered outdoor area and double garage. It caters to the preferences of those seeking a comfortable and visually appealing space.

## Fairhaven Homes

Suggested block width and depth are a guide only. Actual front, rear and side setbacks vary based on developer, council and rescode requirements.  
© Copyright. Reproduction in any form either in whole or part is forbidden. Fairhaven Homes has the right to alter or improve this plan without notice.  
CDB-U 48497

# Standard Floorplan



## Specifications

Living	Garage	Porch*	C.O.A	Total*
157.02m <sup>2</sup>	36.05m <sup>2</sup>	2.13m <sup>2</sup>	9.58m <sup>2</sup>	204.77m <sup>2</sup>
16.90sq	3.88sq	0.23sq	1.03sq	22.04sq

## Fairhaven Homes

# Specifications & Options

## Suitable Facades

Harbour	Matrix	Dune	Canyon	Range	Providence
Pier	Eco	Peak	Surf Coast	Ravine	Resort
Botany	Tower	Sierra	Haven		

Block Width	Block Depth	House Width	House Depth	House Area
12.5m	29m	11.1m	21m	22.04sq

## All Available Options

- ★ Increased Walk-In-Robe and Ensuite with Extended Shower and Vanity
- ★ 3 Bedroom in lieu of 4, with Walk-In-Robes, added Study and Relocated Bathroom
- ★ Raked Ceiling
- ★ Extended Covered Outdoor Area
- ★ Walk-In-Pantry with Extended Shower and Vanity to Ensuite
- Increased Walk-In-Robe and Ensuite
- Swap Living and Bedroom 1 Layout
- Extended Shower to Bathroom
- Extended Cabinetry to Laundry
- Powder Room in lieu of WC
- Walk-In-Pantry


[More options available](#) [Speak to a New Home Consultant](#)

★ Popular Option

**Browse our Brochure Library**

Explore our full range of Floorplans, Facades & Inclusions.

[View brochures](#)



## Fairhaven Homes