



BRIDGEWATER COLLECTION

# The Clovelly

19

4  1  2  2  1 

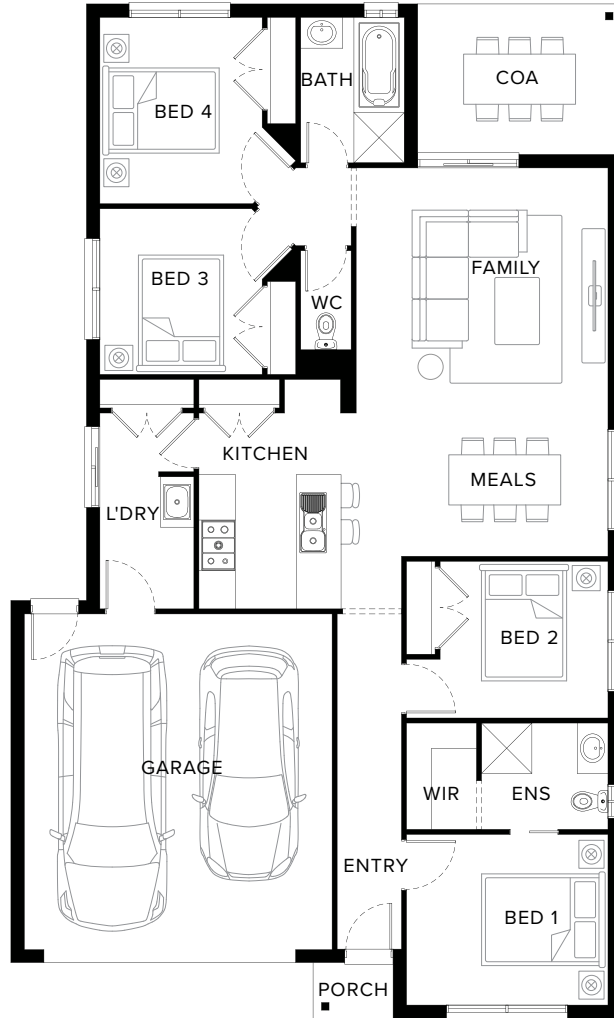
## Comfort meets Thoughtfulness

Embrace contemporary and comfortable design of the Clovelly. One of our most popular home, this four-bedroom design has everything you want and need. The well-thought-out layout includes two living rooms, two bathrooms, a covered outdoor area and double garage. It caters to the preferences of those seeking a comfortable and visually appealing space.

## Fairhaven Homes

Suggested block width and depth are a guide only. Actual front, rear and side setbacks vary based on developer, council and rescode requirements.  
© Copyright. Reproduction in any form either in whole or part is forbidden. Fairhaven Homes has the right to alter or improve this plan without notice.  
CDB-U 48497

# Standard Floorplan



4 1 2 2 1

## Specifications

Living	Garage	Porch*	C.O.A	Total*
130.70m <sup>2</sup>	36.08m <sup>2</sup>	1.43m <sup>2</sup>	9.79m <sup>2</sup>	178.01m <sup>2</sup>
14.07sq	3.88sq	0.15sq	1.05sq	19.16sq

## Fairhaven Homes

# Specifications & Options

## Suitable Facades

Harbour	Matrix	Dune	Canyon	Range	Resort
Pier	Eco	Peak	Surf Coast	Ravine	
Botany	Tower	Sierra	Haven	Providence	

Block Width	Block Depth	House Width	House Depth	House Area
12.5m	21m	10.9m	18.1m	19.16sq

## All Available Options

- ★ 3 Bedroom in lieu of 4, with Living and Reconfigured Bedroom 1, Walk-In-Robe, Ensuite Layout
- ★ 3 Bedroom in lieu of 4, with Walk-In-Pantry and Relocated Laundry, Extended Shower and Vanity to Ensuite
- ★ Swap Bedroom 3 with Bathroom, WC and Alternate Bathroom Layout with Extended Vanity
- ★ Raked Ceiling
- Extended Cabinetry to Laundry
- 3 Bedroom in lieu of 4, with Study
- 3 Bedroom in lieu of 4, with Increased Ensuite and Walk-In-Robe Layout with Extended Shower
- 3 Bedroom in lieu of 4, with Walk-In-Pantry and Relocated Laundry with Extended Cabinetry
- Alternate Layout and Extended Cabinetry

More options available

Speak to a New Home Consultant

★ Popular Option

## Browse our Brochure Library

Explore our full range of Floorplans, Facades & Inclusions.

[View brochures](#)



## Fairhaven Homes